

Model H600SJP

TELESCOPIC BOOM LIFTS



MORE ECONOMIC

- Electric power for zero emissions and near-silent running indoors.

MORE PRODUCTIVE

- Stay up and running longer with onboard charging.

MORE ACCESS

- Get great access to hard-to-reach places with near-vertical jib positioning and 180-degree side-to-side movement.

SMART DESIGN

- Enjoy industry leading upcycles so you can work longer with higher productivity.

Preliminary version



Standard Features

- Multiple function operation
- Full proportional drive joystick control with integral thumb steer switch
- Full proportional main boom and swing joystick control
- Multiple speed control for lower boom, telescope and platform rotate
- Selectable creep speed on drive / lift and swing functions
- 1.22 m articulating Jib
- JibPLUS® with 4 way axis 1.24m Jib
- 180 degree powered platform rotator
- Platform console machine status light panel *
- Load sensing system
- AC power cable to platform
- 8 x 6V 415 A/hr deep cycle batteries
- On-Board diesel powered quick charge gen set
- Automatic traction control
- Programmable "Personality" settings
- On-board self-diagnostic testing
- Enclosed battery / electrical compartment
- 23 amp automatic battery charger
- Automatic rear wheel brakes
- Sculptured ABS hoods
- 3 degree tilt alarm and indicator light
- 36/14LL - 22.5 foam filled non marking tyres
- Oscillating front axle
- Lifting/tie down lugs
- Hour meter
- Ground control selector switch with key lock
- Battery condition indicator
- All motion alarm
- Horn
- Platform tool tray
- Manual descent system

Standard Specifications

- Diesel Engine
Kubota OC60 Air-cooled 5 kW
- Batteries
8 x 6V 390 A/hr AGM
- Drive Motors
Dual Electric Traction
- Hydraulic Motor
Perm. Magnet
- Hydraulic Pump
Gear Pump
- Tyres
36/14LL-22.5 (Foam Filled/Non-Marking)
- Brakes
Automatic Spring Applied
- Fuel Tank Capacity
50 L
- Hydraulic Capacity
80 L
- Auxiliary Power
48V DC

Accessories & Options

- 0.76 m x 1.22 m side entry swing or drop gate
- 0.76 m x 1.83 m side entry swing or drop gate
- 0.76 m x 0.91 m drop bar, rear entry *****
- Tri entry 0.91 m x 1.83 m swing gate or drop gate
- 13 mm air line to platform
- All wheel assist
- Light package ***
- Platform worklights
- Head & Tail Lights
- Amber strobe light
- Plugs & Sockets
- Hostile environment package ****
- Skyguard with beacon
- Skyguard without beacon
- Skyline
- Skyeeye
- Cold weather package *****
- Synthetic biodegradable hydraulic oil
- Synthetic hydraulic oil (VG 15)
- Synthetic hydraulic oil (VG 32)
- ClearSky Locate
- ClearSky CAN
- Acrylic console shield
- Cylinder bellows
- Corner storage tray
- Skysense level 1
- Skysense level 2
- Mobile control *****

* Provides indicator lights at platform control console for system distress, low fuel, tilt light, and foot switch status.
 ** Low oil pressure and high coolant temperature alarms with shut-down enabled/disabled by analyser.
 *** Includes platform mounted work lights and head & tail lights.
 **** Includes console cover, boom wipers and cylinder bellows.
 ***** Available only with drop bar type entry
 ***** Includes a battery blanket, hydraulic tank heater, block heater and glow plugs (diesel only).
 ***** Pending CE certification

Model H600SJP

TELESCOPIC BOOM LIFTS

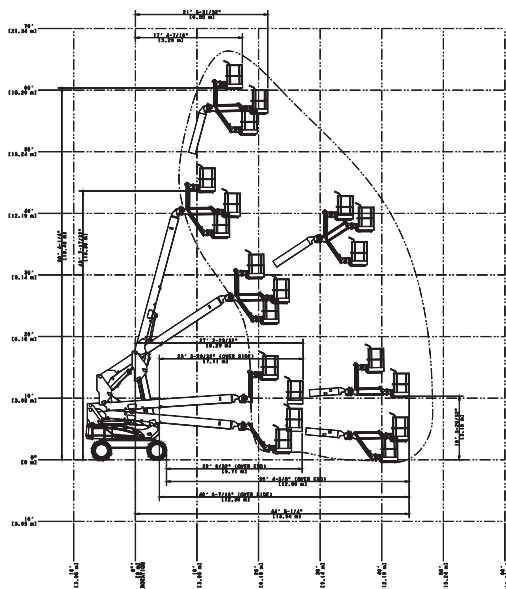
Performance

• Working Height	20.39 m
• Platform Height	18.39 m
• Horizontal Outreach	13.54 m
• Swing Non-Continuous	400°
• Platform Capacity – Unrestricted	230 kg
• Platform Rotator (Hydraulic)	180°
• Jib – Overall Length	1.24 m
• Jib – Range of articulation	145° Vertical (+89°/-56°)
• JibPLUS® – Range of Articulation	180° Horizontal
A. Platform Size	0.76 m x 1.83 m
B. Overall Width	2.42 m
C. Tailswing (working condition)	1.23 m
D. Stowed Height	2.54 m
E. Stowed Length	10.15 m
F. Wheelbase	2.74 m
G. Ground Clearance	0.30 m
• Machine weight *	7,807 kg
• Maximum Ground Bearing Pressure	3.9 kg/cm ²
• Occupied floor area	8.9 m ²
• Drive Speed	4.8 km/h
• Gradeability	30% 2WD/ 4WD
• Axle Oscillation	0.20 m
• Turning Radius – Inside	1.23 m 2WD/ 1.22 4WD
• Turning Radius – Outside	4.64 m 2WD/ 4.66 4WD

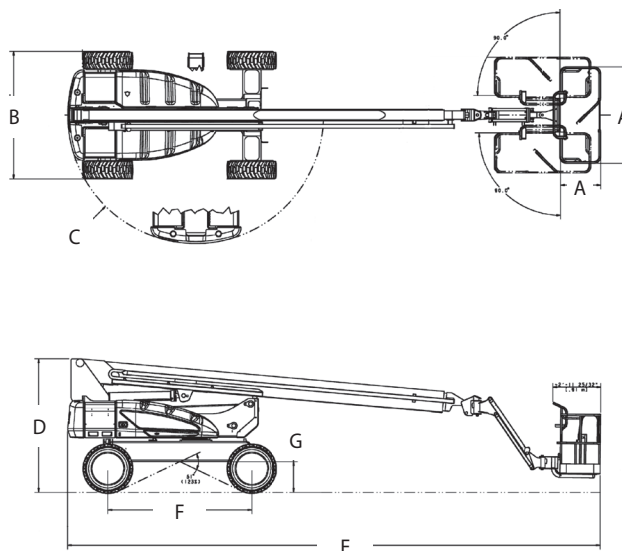


* Certain options or country standards may increase weight and/or dimensions.

Reach Diagram



Dimensions



IMPORTANT

JLG is continually researching and developing products and reserves the right to make modifications without prior notice. All data in this document is indicative. Certain options or country standards will increase weight. Specifications may change to meet country standards or with the addition of optional equipment.

Due to continuous product improvements, JLG Industries reserves the right to make specification and/or equipment changes without prior notification.



JLG EMEA BV

Polaris Avenue 63
2132 JH Hoofddorp
The Netherlands
Tel.: +31 (0)23 565 5665
www.jlg.com

An Oshkosh Corporation Company